

Comparison of superior airway dimensions and cephalometric anatomic landmarks between 8–12-year-old children with obstructive sleep apnea and healthy children using CBCT images

Farzad Esmaeili¹, Amirhouman Sadrhaghighi², Mahnaz Sadeghi-shabestari³, Parastou Nastarin^{2*}, Aliakbar Niknafs⁴

¹Department of Oral and Maxillofacial Radiology, Faculty of Dentistry, Tabriz University of Medical Sciences, Tabriz, Iran

²Department of Orthodontics, Faculty of Dentistry, Tabriz University of Medical Sciences, Tabriz, Iran

³Immunology Research Center, TB and lung research center, Children hospital, Tabriz University of Medical Sciences, Tabriz, Iran

⁴Dentist, Private Practice, Tabriz, Iran

ARTICLE INFO

Article History:

Received: 4 June 2021

Accepted: 23 Dec. 2021

ePublished: 29 May 2022

Keywords:

Airway obstruction

Cone-beam computed

tomography

Obstructive sleep apnea

Abstract

Background. The etiology of obstructive sleep apnea (OSA) syndrome in children significantly differs from adults. In previous studies, only some of the indices have been investigated using CBCT. This study compares all the measurable indices of airway dimensions and anatomical cephalometric landmarks between children with OSA and healthy ones using cone-beam computed tomography (CBCT).

Methods. Dimensions of the airway and cephalometric values were measured on CBCT scans of 50 children aged 8–12 (25 patients with OSA and 25 healthy subjects) and then compared between the two groups. The results of this study were analyzed with independent *t* test using SPSS 17 at a significance level of $P < 0.05$.

Results. Area, length, volume, anteroposterior length, and size of the upper airway in subjects with OSA were lower than those in healthy children, while the average values of SNA, SNB, and ANB in the OSA group were higher than those in the healthy group ($P = 0.366$, $P = 0.012$, and $P = 0.114$, respectively). Also, BaSN, PNS/AD1, and PNS/AD2 measurements in subjects with OSA were lower than healthy subjects ($P = 0.041$, $P = 0.913$, and $P = 0.015$, respectively). In addition, the width and anteroposterior length of the upper airway, SNB, BaSN, PNS/AD1, and PNS/AD2 indices were significantly different between the healthy group and those with OSA ($P < 0.05$).

Conclusion. Reduced upper airway dimensions, adenoid tissue enlargement, and cranial base flexion might play an important role in OSA development in children. However, most skeletal variables, such as the anteroposterior relationship of jaws and jaw rotation, were not significantly different between the two groups.

Introduction

Total or partial obstruction of the airway during sleep, called obstructive sleep apnea (OSA)/hypopnea,¹ is a common disorder that affects 0.7%–2% of the pediatric population.^{1,2} It is usually determined by apnea-hypopnea index of > 5 events/hour, which is the number of total or partial obstruction events per hour during sleep.³ Major signs and symptoms of OSA include snoring, restless sleep, neurocognitive and behavioral problems, headaches, attention deficit, and hyperactivity.^{2,4,5} Some authors have suggested that if OSA is not treated during childhood, it might lead to drug and alcohol abuse in adult life.⁶

The etiology of OSA in children is different from adults. In adults, ASO is usually accompanied by obesity, but most children with OSA are not obese. In contrast, adenotonsillar hypertrophy is considered one of the major

causes of OSA in children.⁷ Some other causes of OSA in children include mandibular deficiency or retrusion, increased fat accumulation in the pharyngeal area, and neuromotor abnormalities.^{8–10} Also, it seems that children with OSA have a narrower airway than normal children.¹⁰

The gold standard of OSA diagnosis is in-lab polysomnography which is expensive and time-consuming.⁸ Therefore, different tools have been designed for OSA screening, such as the Berlin questionnaire and STOP and STOP-Bang questionnaires that are completed in a few minutes and are valid.^{11,12}

There is a relationship between sleep disorders and children's physical, emotional, and neurocognitive problems; therefore, OSA diagnosis is important in the childhood period.^{4,13} Studies have revealed that besides narrow upper airway (UA), aging, Berlin questionnaire

*Corresponding author: Parastou Nastarin, Email: p.nastarin@gmail.com

© 2022 The Author(s). This is an open access article distributed under the terms of the Creative Commons Attribution License (<http://creativecommons.org/licenses/by/4.0/>), which permits unrestricted use, distribution, and reproduction in any medium, provided the original work is properly cited.

high scores, and gender (male > female) are among the risk factors of OSA.¹ Also, soft tissue to craniofacial space ratio, which is the ratio of upper airway soft tissue volume to nasopharyngeal and oropharyngeal craniofacial space, is higher in OSA patients.¹⁴ Some studies have used lateral cephalograms to evaluate UA dimensions in children with OSA, revealing decreased pharyngeal diameters at levels of the uvula, adenoids, and tongue,¹⁵ with a significant, positive correlation with MRI findings. Therefore, it is a valid method for retropharyngeal and nasopharyngeal measurements.¹⁶ Several studies have evaluated airways in OSA children using cone-beam computed tomography (CBCT) as a three-dimensional (3D) and precise imaging method, concluding that the presence and severity of OSA are correlated with lateral obstruction of UA and a narrow nasopharyngeal area.^{1,17}

This study aimed to compare superior airway dimensions and cephalometric anatomic landmarks between 8–12-year-old children with OSA and healthy children using CBCT images, which is the first study in this age group to the best of our knowledge. This study also helps determine specific measurements that suggest OSA possibility in children, leading to more precise diagnosis and effective treatment approaches.

Methods

This descriptive study was carried out on CBCT scans of 50 children aged 8–12 (25 patients with OSA and 25 healthy subjects), referring to the Department of Oral and Maxillofacial Radiology, Faculty of Dentistry, Tabriz University of Medical Sciences for different reasons.

CBCTs of children in this age range were found in the department archives, and Berlin questionnaires were filled for every sample in the study using telephone calls.

The inclusion criteria consisted of OSA confirmed by the Berlin questionnaire for the OSA group and scans of healthy children matched to those with OSA regarding gender and age from the archives, whose health was confirmed by the Berlin questionnaire as the control group. Exclusion criteria consisted of the presence of any syndromes or clefts, a history of surgery in the palatopharyngeal area, significant medical and growth conditions, a history of the face and neck trauma, upper airway anomalies, asthma, and any upper airway acute or chronic infection.¹⁵

All the CBCT scans were obtained by a NewTom VGi cone-beam CT unit (Verona/Italy), and image reconstruction was conducted by NNT Viewer software (version 2.21). The images were observed on a 19-inch LCD monitor (190B Phillips, Netherlands) with a resolution of 1024*1208 and 32 bits by an OMF radiologist.

The images were exported as DICOM (.dcm) files and then imported to Mimics10.10 (Materialise NV, Belgium) software for airway analysis.

To determine the volumetric region of interest, a mid-sagittal picture was exported, and upper and lower limits of the UA region were defined as below:

Upper limit: A line parallel to the FH (Frankfurt Plane) at the level of the most distal point of the hard palate

Lower limit: A line parallel to the FH at the level of the most anterior-inferior point of the second cervical vertebra (C₂).

To evaluate the width and anteroposterior dimension of UA, an axial picture of the region with the smallest dimension was selected.

UA length was measured from PNS to the most anterior-inferior point of C₂.

Using Mimic software, the volume and cross-section area of UA were automatically measured in mm³ and mm² in the oropharyngeal region.

Table 1 presents the cephalometric and other variables evaluated in this study. Figures 1-4 show some cephalometric measurements.

Statistical analysis

The results of this study were reported by descriptive statistics (mean ± SD, frequencies, and percentages). Kolmogorov-Smirnov test showed normal distribution of quantitative variables (Table 2); therefore, independent samples *t* test was used to compare data between the groups. Data analysis was performed using SPSS 17, and *P* < 0.05 was considered statistically significant.

Results

The OSA group consisted of 12 female (48%) and 13 male (52%) patients (mean age = 9.25 ± 1.08 years). Twelve females (48%) and 13 males (52%) were included in the control group (mean age = 9 ± 2.56 years).

Table 3 presents the means ± SD of all the measured variables in each group and compares variables between the two groups using an independent *t* test.

According to the results, UA area, volume, and length were smaller in the OSA group compared to the control group, but the difference was not statistically significant (*P* = 0.547, 0.606, and 0.706, respectively).

The width and the anteroposterior dimension of UA were significantly lower in the OSA group compared to the control group (*P* = 0.028 and 0.037, respectively).

There was no statistically significant difference between groups regarding SNA (*P* = 0.366), ANB (*P* = 0.114),

Table 1. Cephalometric and other variables evaluated in this study and their measurement methods

Variables	Measurement method
SNA	The angle created between sella, nasion, and A points
SNB	The angle created between sella, nasion, and B points
ANB	Difference of SNA and SNB angles
SN-MP	The angle between SN line and mandibular plane
PP-MP	The angle between the palatal plane and mandibular plane
BaSN	The angle created between basion, sella, and nasion points
PNS-AD1	Shortest distance between PNS and Adenoid tissue
PNS-AD2	Distance between PNS and adenoid tissue on the line perpendicular to BaS from PNS

Table 2. Normality of data distribution using Kolmogorov-Smirnov test

Variable	Test statistic	P value
UA volume (mm ³)	1.064	0.207
UA area (mm ²)	0.975	0.298
UA length (mm)	0.629	0.824
UA Ant-Post dimension (mm)	0.733	0.656
UA width (mm)	0.6	0.865
SNA (degrees)	2.150	0.228
SNB (degrees)	0.619	0.838
ANB (degrees)	0.697	0.716
SN-MP(degrees)	0.687	0.732
PP-MP (degrees)	0.855	0.457
IMPA (degrees)	1.506	0.212
BaSN (degrees)	0.587	0.881
PNS-AD1 (mm)	0.561	0.911
PNA-AD2 (mm)	0.685	0.735

Table 3. Means \pm SD of all the variables in each group and comparison of the variables between OSA and control group using independent t test

Variable	OSA group	Control group	P value
UA volume (mm ³)	3670.34 \pm 2161.81	7456.37 \pm 299.56	0.606
UA area (mm ²)	2071.64 \pm 2161.81	2686.82 \pm 1592.98	0.547
UA length (mm)	30.67 \pm 2.07	37.18 \pm 3.64	0.706
UA Ant-Post dimension (mm)	6.94 \pm 3.57	7.59 \pm 0.99	0.028
UA width (mm)	16.11 \pm 1.99	23.33 \pm 2.49	0.037
SNA (degrees)	82.63 \pm 3.06	74.66 \pm 3.67	0.366
SNB (degrees)	76.76 \pm 7.05	73.46 \pm 2.24	0.012
ANB (degrees)	5.86 \pm 4.01	2.86 \pm 1.60	0.114
SN-MP(degrees)	40.15 \pm 4.88	33.33 \pm 4	0.902
PP-MP (degrees)	23.93 \pm 6.91	12.7 \pm 3.85	0.801
BaSN (degrees)	125.7 \pm 5.02	142.46 \pm 5.51	0.041
PNS-AD1 (mm)	5.6 \pm 0.3	8.23 \pm 1.12	0.913
PNA-AD2 (mm)	30.13 \pm 4.35	37.83 \pm 3.09	0.015

SN-MP ($P=0.902$), PP-MP ($P=0.801$), and PNS-AD1 ($P=0.913$).

SNB values were higher in the OSA group ($P=0.012$); on the other hand, BaSN angle and PNS-AD2 values were lower in the OSA group than healthy participants ($P=0.041$ and 0.015 , respectively).

Discussion

There is a gap in studies conducted to evaluate factors related to OSA in children, while most studies are based on the adult population. The study of growth patterns is fundamental in developmental disorders such as OSA. It is noteworthy to mention that finding 50 human subjects who meet inclusion criteria in the specified age range was a difficult task that we managed to accomplish. On the other hand, upper airway structures undergo maturational changes from childhood to adult life.¹⁸ Therefore, evaluating UA in OSA patients during different

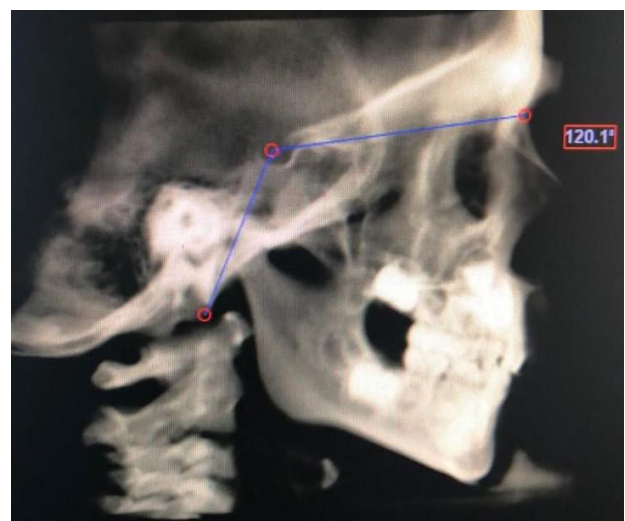
age ranges is of great value. In this study, UA investigation was performed on 8-12-year-old children for the first time, whose UAs are changing due to continuous growth; also, respiratory problems can cause important health issues.⁴ Understanding the morphological etiology of OSA in growing children might lead to more precise and effective treatment approaches.

Upper airway obstruction can occur in one or several areas from nostrils to the larynx, which needs to be precisely identified to increase treatment effectiveness and improve patients' quality of life.¹⁹ Three-dimensional imaging techniques such as magnetic resonance imaging (MRI), computed tomography (CT), and CBCT can be employed for the 3D evaluation and analysis of organs; therefore, they might help detect areas of obstruction or decreased dimensions of UA as well.²⁰ This study used CBCT to evaluate UA dimensions and other cephalometric measurements, which provide a 3D display of head and neck hard and soft tissues with lower x-ray exposure to the patient compared to CT imaging.²¹

UA dimensions

It seems logical that some UA dimensions in OSA patients differ from those in healthy children; in this study, we evaluated the width, area, length, anteroposterior dimension, and volume of UA in OSA and healthy children. The results revealed that UA width and UA anteroposterior dimensions were significantly lower in the OSA group, with no significant difference in UA area, length, and volume between healthy and OSA children. It seems reasonable that lower UA area, volume, and other UA dimensions can lead to resistance to airflow, making the person susceptible to OSA.

Enciso et al¹ reported that UA width in CBCT measurements was significantly lower in the OSA group than in the healthy group. In a study by Buchanan et al,²² UA width was significantly lower in the OSA group, confirming the findings of the current study. Volume and area were significantly lower in the OSA group, consistent

**Figure 1.** Measurement of BaSN angle

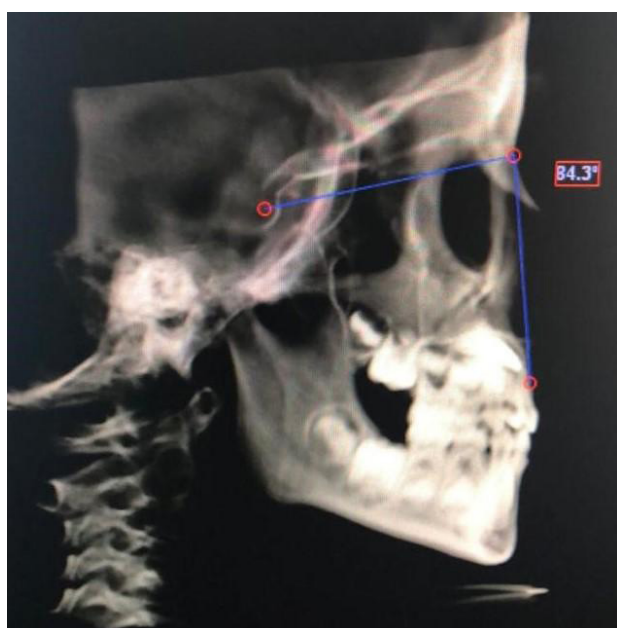


Figure 2. Measurement of SNA angle.



Figure 3. Measurement of SNB angle.

with the current study results. However, these findings were not statistically significant in our study, which might be related to different ethnic groups compared to our study. Also, in Buchanan and colleagues' study, UA was longer in the OSA group, which contrasts our results. The reason might be the use of different points for defining UA length (hard palate to epiglottis) compared to our study. However, a study by Neelapu et al²³ was consistent with our study regarding longer UA in OSA patients due to lower hyoid position.

MRI assessment of UA dimensions by Arens et al²⁴ showed that the UA area was significantly lower in children with OSA than in the control group, indicating the same but non-significant difference in our study. These findings can be justified by considering the higher sensitivity of

MRI for soft tissue evaluation compared to CBCT.

This study also evaluated some cephalometric measurements:

- SNA, SNB, ANB as indicators of jaws position and relationship
- BaSN angle to show the amount of cranial base flexion
- SN/MP and SN/PP as indicators of vertical growth pattern
- PNS to AD1 and AD2 distances to represent adenoid tissue projection in the pharyngeal space

Although SNA and ANB values showed no statistically significant differences between the two groups, the SNB angle was significantly larger in the OSA group. Therefore, there was no significant difference in maxillary anteroposterior position between the two groups; however, the mandible was significantly more anteriorly positioned in the OSA group according to SNB measures, contrasting some previous studies like Ryu et al,²⁵ who claimed that mandibular retrognathism had a positive correlation with OSA severity. However, some other studies failed to find any differences in mandibular position between OSA and control groups.²⁶ Considering the age limit of this study's samples in whom the mandible is still actively growing, this distinct result is significant, suggesting that mandibular retrognathism might not be a risk factor for OSA in children. Similarly, the results of ANB comparisons between the two groups in this study showed that skeletal anteroposterior relationships might play no significant role in OSA development in children.

SN/MP and PP/MP angles were higher in healthy samples, with no statistically significant differences. Therefore, it can be concluded that the vertical dimension might not be responsible for OSA in children.

BaSN angle was significantly lower in the OSA group, consistent with studies that showed a positive correlation



Figure 4. Measurement of PNS-AD1 distance.

between cranial base flexion and anteroposterior airway dimensions that might influence OSA development.^{23,27}

Similar to previous studies, a significantly smaller distance between PNS and AD2 and a non-significant, smaller distance between PNS and AD2 in the current study demonstrate the possible role of adenoid tissue enlargement in OSA development in children.^{28,29}

Conclusion

The results of this study demonstrated that Reduced UA dimensions might play an important role in OSA development in children; however, most of the skeletal variables, such as the anteroposterior relationship of jaws and jaw rotations, were not significantly different between children with OSA and the control group.

There was significantly more flexion of the cranial base in the OSA group, resulting in a narrower UA in these children.

Adenoid tissues were larger in children with OSA compared to healthy children.

Acknowledgments

We would like to acknowledge the staff of the Department of the Oral and Maxillofacial Radiology, Faculty of Dentistry, Tabriz University of Medical Sciences, who warmly helped us in performing the study.

Authors' Contributions

FE and AHS planned the study. AHS, MS, and AN performed the study. PN and AHS performed the literature review. PN drafted the manuscript, and FE carried out the statistical analyses and interpretation of data. AHS critically revised the manuscript for intellectual content. All the authors have read and approved the final manuscript.

Funding

This study was not supported financially by any organization.

Ethics approval

This study was approved ethically by the Ethics Committee of Tabriz University of Medical Sciences: IR.TBZMED.REC.1397.150.

Competing interests

The authors report no conflict of interest in this study.

References

- Enciso R, Nguyen M, Shigeta Y, Ogawa T, Clark GT. Comparison of cone-beam CT parameters and sleep questionnaires in sleep apnea patients and control subjects. *Oral Surg Oral Med Oral Pathol Oral Radiol Endod.* 2010;109(2):285-93. doi: 10.1016/j.tripleo.2009.09.033.
- Maris M, Verhulst S, Wojciechowski M, Van de Heyning P, Boudewyns A. Prevalence of obstructive sleep apnea in children with Down syndrome. *Sleep.* 2016;39(3):699-704. doi: 10.5665/sleep.5554.
- Garvey JF, Pengo MF, Drakatos P, Kent BD. Epidemiological aspects of obstructive sleep apnea. *J Thorac Dis.* 2015;7(5):920-9. doi: 10.3978/j.issn.2072-1439.2015.04.52.
- Youssef NA, Ege M, Angly SS, Strauss JL, Marx CE. Is obstructive sleep apnea associated with ADHD? *Ann Clin Psychiatry.* 2011;23(3):213-24.
- Izu SC, Itamoto CH, Pradella-Hallinan M, Pizarro GU, Tufik S, Pignatari S, et al. Obstructive sleep apnea syndrome (OSAS) in mouth breathing children. *Braz J Otorhinolaryngol.* 2010;76(5):552-6. doi: 10.1590/S1808-86942010000500003.
- Wong MM, Brower KJ, Nigg JT, Zucker RA. Childhood sleep problems, response inhibition, and alcohol and drug outcomes in adolescence and young adulthood. *Alcohol Clin Exp Res.* 2010;34(6):1033-44. doi: 10.1111/j.1530-0277.2010.01178.x.
- Kohler M. Risk factors and treatment for obstructive sleep apnea amongst obese children and adults. *Curr Opin Allergy Clin Immunol.* 2009;9(1):4-9. doi: 10.1097/ACI.0b013e32831d8184.
- Tan HL, Gozal D, Kheirandish-Gozal L. Obstructive sleep apnea in children: a critical update. *Nat Sci Sleep.* 2013;5:109-23. doi: 10.2147/nss.s51907.
- Marcus CL, Brooks LJ, Draper KA, Gozal D, Halbower AC, Jones J, et al. Diagnosis and management of childhood obstructive sleep apnea syndrome. *Pediatrics.* 2012;130(3):e714-55. doi: 10.1542/peds.2012-1672.
- Marcus CL, Katz ES, Lutz J, Black CA, Galster P, Carson KA. Upper airway dynamic responses in children with the obstructive sleep apnea syndrome. *Pediatr Res.* 2005;57(1):99-107. doi: 10.1203/01.pdr.0000147565.74947.14.
- Sin DD, Fitzgerald F, Parker JD, Newton G, Floras JS, Bradley TD. Risk factors for central and obstructive sleep apnea in 450 men and women with congestive heart failure. *Am J Respir Crit Care Med.* 1999;160(4):1101-6. doi: 10.1164/ajrccm.160.4.9903020.
- Schröder CM, O'Hara R. Depression and obstructive sleep apnea (OSA). *Ann Gen Psychiatry.* 2005;4:13. doi: 10.1186/1744-859x-4-13.
- Liu X, Liu L, Owens JA, Kaplan DL. Sleep patterns and sleep problems among schoolchildren in the United States and China. *Pediatrics.* 2005;115(1 Suppl):241-9. doi: 10.1542/peds.2004-0815F.
- Schwab RJ, Kim C, Bagchi S, Keenan BT, Comyn FL, Wang S, et al. Understanding the anatomic basis for obstructive sleep apnea syndrome in adolescents. *Am J Respir Crit Care Med.* 2015;191(11):1295-309. doi: 10.1164/rccm.201501-0169OC.
- Pirilä-Parkkinen K, Löppönen H, Nieminen P, Tolonen U, Pirttiniemi P. Cephalometric evaluation of children with nocturnal sleep-disordered breathing. *Eur J Orthod.* 2010;32(6):662-71. doi: 10.1093/ejo/cjp162.
- Pirilä-Parkkinen K, Löppönen H, Nieminen P, Tolonen U, Pääkkö E, Pirttiniemi P. Validity of upper airway assessment in children: a clinical, cephalometric, and MRI study. *Angle Orthod.* 2011;81(3):433-9. doi: 10.2319/063010-362.1.
- Rossi RC, Rossi NJ, Filho EI, Rossi NJ, Chilvarquer I, Fujita RR, et al. Differences in volume and area of the upper airways in children with OSA compared to a healthy group. *J Dent Sleep Med.* 2016;3(3):81-7. doi: 10.15331/jdsm.5992.
- Marcus CL, Smith RJ, Mankarious LA, Arens R, Mitchell GS, Elluru RG, et al. Developmental aspects of the upper airway: report from an NHLBI Workshop, March 5-6, 2009. *Proc Am Thorac Soc.* 2009;6(6):513-20. doi: 10.1513/pats.200905-024CB.
- Strauss RA, Burgoyne CC. Diagnostic imaging and sleep medicine. *Dent Clin North Am.* 2008;52(4):891-915. doi: 10.1016/j.cden.2008.06.002.
- Ogawa T, Enciso R, Shintaku WH, Clark GT. Evaluation of cross-section airway configuration of obstructive sleep apnea. *Oral Surg Oral Med Oral Pathol Oral Radiol Endod.* 2007;103(1):102-8. doi: 10.1016/j.tripleo.2006.06.008.
- Loubele M, Bogaerts R, Van Dijk E, Pauwels R, Vanheusden S, Suetens P, et al. Comparison between effective radiation dose of CBCT and MSCT scanners for dentomaxillofacial applications. *Eur J Radiol.* 2009;71(3):461-8. doi: 10.1016/j.ejrad.2008.06.002.
- Buchanan A, Cohen R, Looney S, Kalathingal S, De Rossi

- S. Cone-beam CT analysis of patients with obstructive sleep apnea compared to normal controls. *Imaging Sci Dent.* 2016;46(1):9-16. doi: 10.5624/isd.2016.46.1.9.
23. Neelapu BC, Kharbanda OP, Sardana HK, Balachandran R, Sardana V, Kapoor P, et al. Craniofacial and upper airway morphology in adult obstructive sleep apnea patients: a systematic review and meta-analysis of cephalometric studies. *Sleep Med Rev.* 2017;31:79-90. doi: 10.1016/j.smr.2016.01.007.
24. Arens R, McDonough JM, Corbin AM, Rubin NK, Carroll ME, Pack AI, et al. Upper airway size analysis by magnetic resonance imaging of children with obstructive sleep apnea syndrome. *Am J Respir Crit Care Med.* 2003;167(1):65-70. doi: 10.1164/rccm.200206-613OC.
25. Ryu HH, Kim CH, Cheon SM, Bae WY, Kim SH, Koo SK, et al. The usefulness of cephalometric measurement as a diagnostic tool for obstructive sleep apnea syndrome: a retrospective study. *Oral Surg Oral Med Oral Pathol Oral Radiol.* 2015;119(1):20-31. doi: 10.1016/j.oooo.2014.07.537.
26. Gungor AY, Turkkahraman H, Yilmaz HH, Yariktas M. Cephalometric comparison of obstructive sleep apnea patients and healthy controls. *Eur J Dent.* 2013;7(1):48-54. doi: 10.1055/s-0039-1698995.
27. Banabilh SM, Suzina AH, Dinsuhaimi S, Singh GD. Cranial base and airway morphology in adult malays with obstructive sleep apnoea. *Aust Orthod J.* 2007;23(2):89-95.
28. Tagaya M, Nakata S, Yasuma F, Miyazaki S, Sasaki F, Morinaga M, et al. Relationship between adenoid size and severity of obstructive sleep apnea in preschool children. *Int J Pediatr Otorhinolaryngol.* 2012;76(12):1827-30. doi: 10.1016/j.ijporl.2012.09.010.
29. Wang J, Zhao Y, Yang W, Shen T, Xue P, Yan X, et al. Correlations between obstructive sleep apnea and adenotonsillar hypertrophy in children of different weight status. *Sci Rep.* 2019;9(1):11455. doi: 10.1038/s41598-019-47596-5.